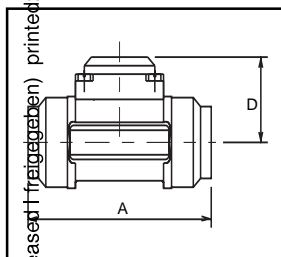


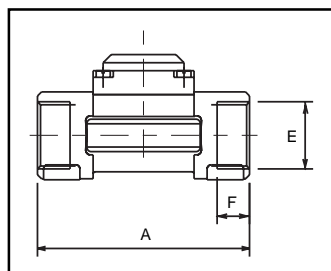
Abmessungen / Dimensions

Edelstahl, Messing DN15 bis DN50 / **Stainless-steel, brass DN 15 to DN50** / Acier inoxydable, laiton DN15 à DN50

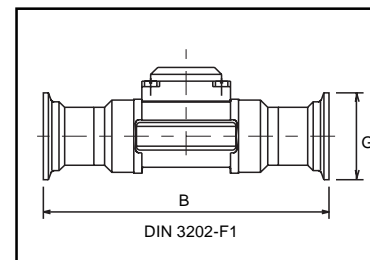
MAN 1000010325 ML Version: B Status: RL (released/ freigegeben) printed: 09.08.2008



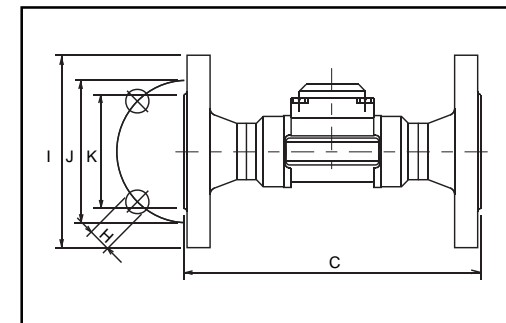
[1]
Schweißende
Welding ends
Emboutis à souder
(ISO 4200)



[2]
Innengewinde
Internal thread
Taraudage
(G, NPT, Rc)



[3]
mit Triclampt
with Triclampt
Triclampt
(ISO 2852)



[4]
mit Flanschen
With flanges
A brides

[mm]

DN	[1]		Länge / Length / Longueur				[2]		Triclampt [3]	Norm*/Standard* Norme*	Flansch/Flange/Bride [4]				
	Außen-ext. ø ø ext.	Dicke/thickness épaisseur	A	B	C (DIN) (ANSI)	C (JIS)	D	E	F		G	H	I ø	J ø	K ø
15	21.3	1.6	84	130	130	152	42.5	G 1/2	16.0	34.0	DIN	4x14.0	95	65.0	45.0
								NPT 1/2	17.0		ANSI	4x15.8	89	60.3	34.9
								Rc 1/2	15.0		JIS	4x15.0	95	70.0	51.0
20	26.9	1.6	94	150	150	178	40.0	G 3/4	17.0	50.5	DIN	4x14.0	105	75.0	58.0
								NPT 3/4	18.3		ANSI	4x15.8	99	69.8	42.9
								Rc 3/4	16.3		JIS	4x15.0	100	75.0	56.0
25	33.7	2.0	104	160	160	216	40.2	G1	23.5	50.5	DIN	4x14.0	115	85.0	68.0
								NPT1	18.0		ANSI	4x15.8	108	79.4	50.8
								Rc1	18.0		JIS	4x19.0	125	90.0	67.0
32	42.4	2.0	119	180	180	229	43.8	G 1 1/4	23.5	50.5	DIN	4x18.0	140	100.0	78.0
								NPT 1 1/4	21.0		ANSI	4x15.8	117	88.9	63.5
								Rc 1 1/4	21.0		JIS	4x19.0	135	100.0	76.0
40	48.3	2.0	129	200	200	241	47.6	G 1 1/2	23.5	64.0	DIN	4x18.0	150	110.0	88.0
								NPT 1 1/2	20.0		ANSI	4x15.8	127	98.4	73.0
								Rc 1 1/2	19.0		JIS	4x19.0	140	105.0	81.0
50	60.3	2.6	148.5	230	230	267	53.7	G2	27.5	77.5	DIN	4x18.0	165	125.0	102.0
								NPT2	24.0		ANSI	4x19.0	152	120.6	92.1
								Rc 2	24.0		JIS	4x19.0	155	120.0	96.0

* DIN 2501/2633, Einbaulänge nach DIN 3202-F1;
* ANSI B16-5-1988, Einbaulänge nach DIN 3202-F1;
* JIS 10K, Einbaulänge nach ANSI B16-10

* **DIN 2501/2633, length according to DIN 3202-F1;**
* **ANSI B16-5-1988, length according to DIN 3202-F1;**
* **JIS 10K, length according to ANSI B16-10**

* DIN 2501/2633, longueur selon DIN 3202-F1;
* ANSI B16-5-1988, longueur selon DIN 3202-F1;
* JIS 10K, longueur selon ANSI B16-10